



## CURRENT TRANSFORMERS

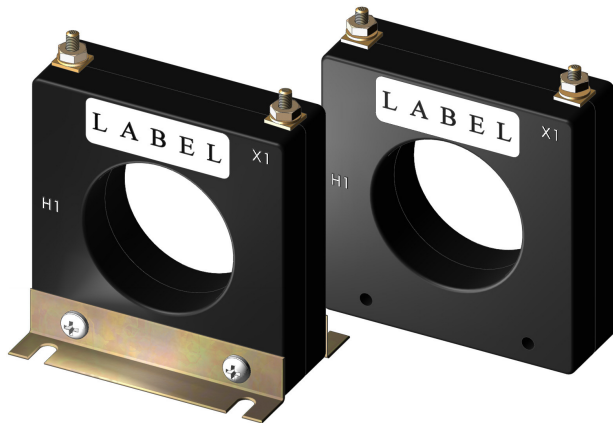
### Model 56 (Window Size: 2.06" Diameters)

**Application:** Used with ammeters, watt meters, and cross current compensation.

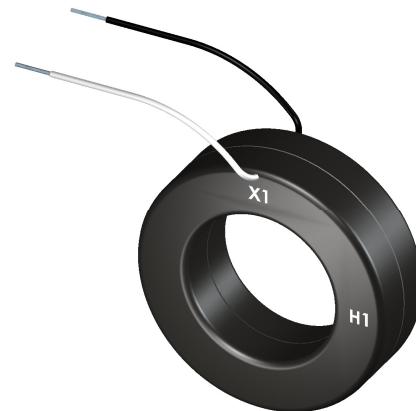
**Frequency:** 50-400 Hz

**Insulation Level:** 600 Volts, 10Kv BIL Full Wave

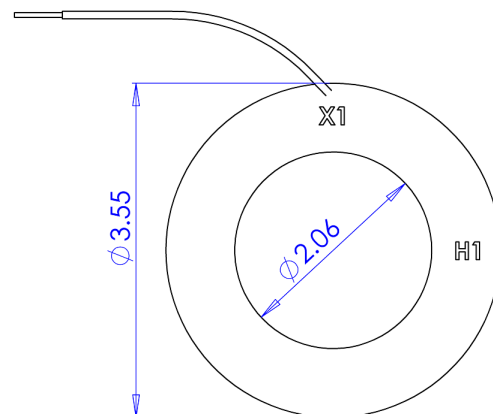
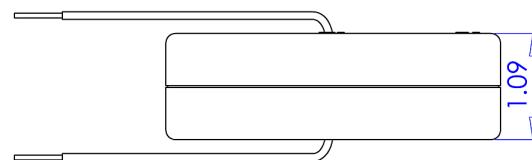
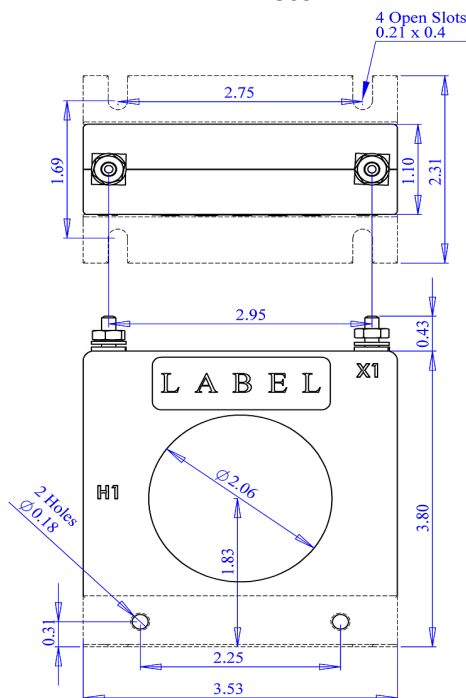
- Flexible leads available for all case configurations. Flexible leads are UL 1015 105°C, C.S.A approved #16 AWG, 24" long standard length. Non-standard lengths are available upon request.
- Terminals are brass studs No. 8-32 UNC with one flat washer, one lock washer and one nut each. Terminals are only available on the square case configuration.
- Approximate weight: 0.5 lbs.



56SHT



56RL





## CURRENT TRANSFORMERS

Model 56 (Window Size: 2.06" Diameter)

Catalog Number	Current Ratio	Models 56SFT, 56RL	
		Accuracy at 60 Hz	Burden VA at 60 Hz
56 **—500	50:5	± 3%	0.5
56 **—750	75:5	± 2%	0.5
56 **—101	100:5	± 1%	1.0
56 **—151	150:5	± 1%	2.5
56 **—201	200:5	± 1%	4.0
56 **—251	250:5	± 1%	6.0
56 **—301	300:5	± 1%	7.5
56**—401	400:5	± 1%	10.0
56**—501	500:5	± 1%	12.5
56**—601	600:5	± 1%	15.0
56**—751	750:5	± 1%	7.0
56**—801	800:5	± 1%	8.0
56**—102	1000:5	± 1%	10.0
56**—122	1200:5	± 1%	12.5

\*\* Note When Ordering use prefix below to indicate unit designation/configuration. (i.e. 56SHT-101)

\*SHT= Square Case w/o molded feet and terminals

\*SHL= Square Case w/o molded feet and 24" leads

RL= Thin Round Case and 24" leads