

TOROIDAL CURRENT TRANSFORMERS

Model 19 Ratio to 5 (Window Size: 4.25" Dia.)

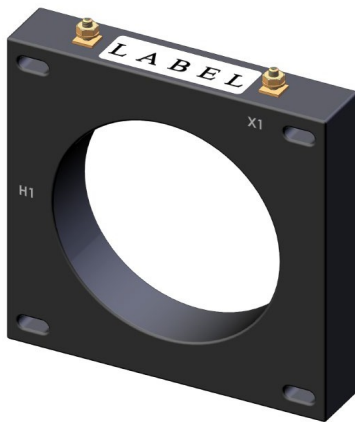
Application: Used with ammeters, watt meters and cross current compensation.

Frequency: 50-400 Hz

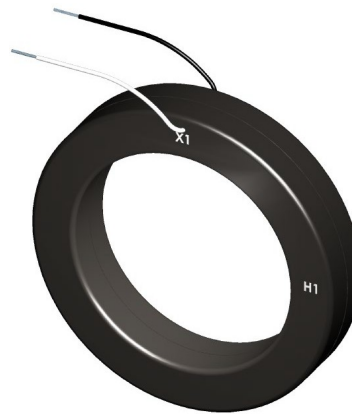
Insulation Level: 600 Volts, 10Kv BIL Full Wave

Standards: CSA 66.1-06, CSA 66.2-06, IEEE C 57.13, and UL 506

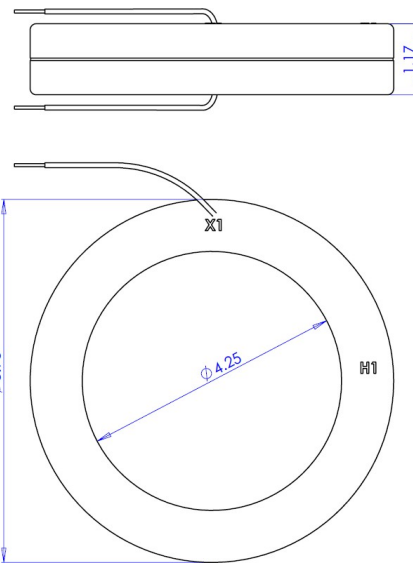
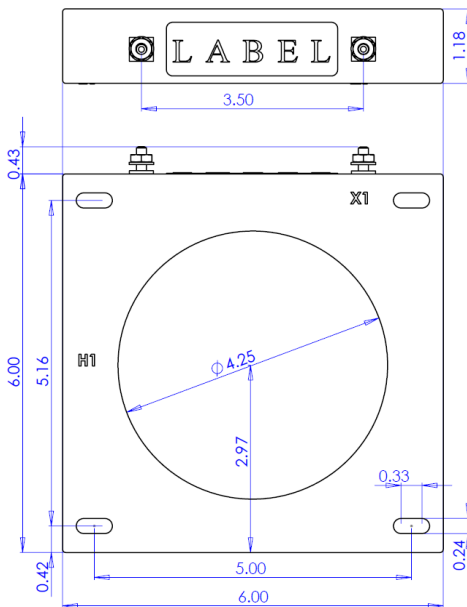
- Flexible leads available for all case configurations. Flexible leads are UL 1015 105°C, C.S.A approved #16 AWG, 24" long standard length. Non-standard lengths are available upon request.
- Terminals are brass. See page 2 for available Stud and Female hardware options.
- Terminals are only available on the square case configuration.
- Mounting bracket kits for the Model 19SHT or 19SHL are available.
- Approximate weight: 3 lbs.



19SHT



19RL



*Note-Mounting brackets for the 19SHT and 19SHL are sold separately (Part Number 1121A00022)

Rev F 06 12 2024

TORODIAL CURRENT TRANSFORMERS

Model 19 Ratio to 5 (Window Size: 4.25" Dia.)

Catalog Number	Current Ratio	VA for $\pm 1\%$ Class	ANSI METERING CLASS AT 60 HZ					Secondary Winding Resistance Ohms at 75°C	Continuous Thermal Rating Factor	
			B0.1	B0.2	B0.5	B0.9	B1.8		at 30°C	at 55°C
19 **--301	300:5	4.0	0.6	1.2	2.4	—	—	0.048	2.0	2.0
19 **--401	400:5	10.0	0.3	0.6	1.2	—	—	0.064	2.0	2.0
19 **--501	500:5	15.0	0.3	0.6	1.2	—	—	0.087	2.0	1.5
19 **--601	600:5	15.0	0.3	0.3	0.6	1.2	—	0.116	2.0	1.5
19 **--751	750:5	25.0	0.3	0.3	0.6	0.6	—	0.145	1.5	1.33
19 **--801	800:5	30.0	0.3	0.3	0.6	0.6	—	0.155	1.5	1.33
19 **--102	1000:5	30.0	0.3	0.3	0.6	0.6	—	0.242	1.33	1.0
19 **--122	1200:5	40.0	0.3	0.3	0.3	0.6	—	0.291	1.33	1.0
19 **--152	1500:5	15.0	0.3	0.3	0.6	1.2	—	0.200	1.5	1.0
19 **--162	1600:5	15.0	0.3	0.3	0.3	0.6	—	0.213	1.5	1.0
19 **--202	2000:5	20.0	0.3	0.3	0.3	0.6	—	0.266	1.33	1.0
19 **--252	2500:5	20.0	0.3	0.3	0.3	0.3	—	0.333	1.0	0.8
19 **--302	3000:5	25.0	0.3	0.3	0.3	0.3	—	0.399	1.0	0.8

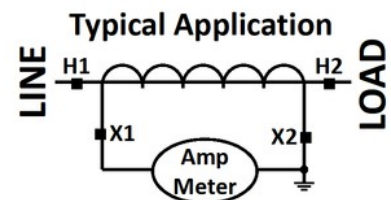
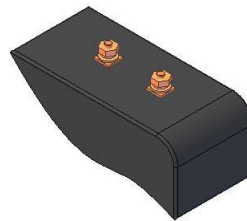
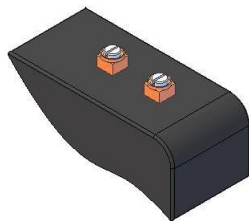
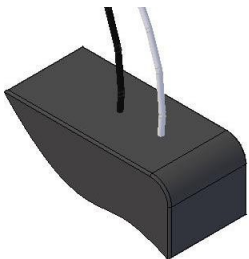
ORDERING NOTE*: When ordering, use the prefix below to indicate unit designation/configuration. (i.e. 19SHT-301)

RL = Thin Round Case with Standard 24" leads (Non-standard lengths are available upon request)

SHX* = Square Case with mounting holes

T = Male (Brass studs No. 8-32 UNC with one flat washer, one lock washer and one nut each)

Y = Female (Brass with one Cup washer, one lock washer and one No. 8-32 UNC binding head screw each)

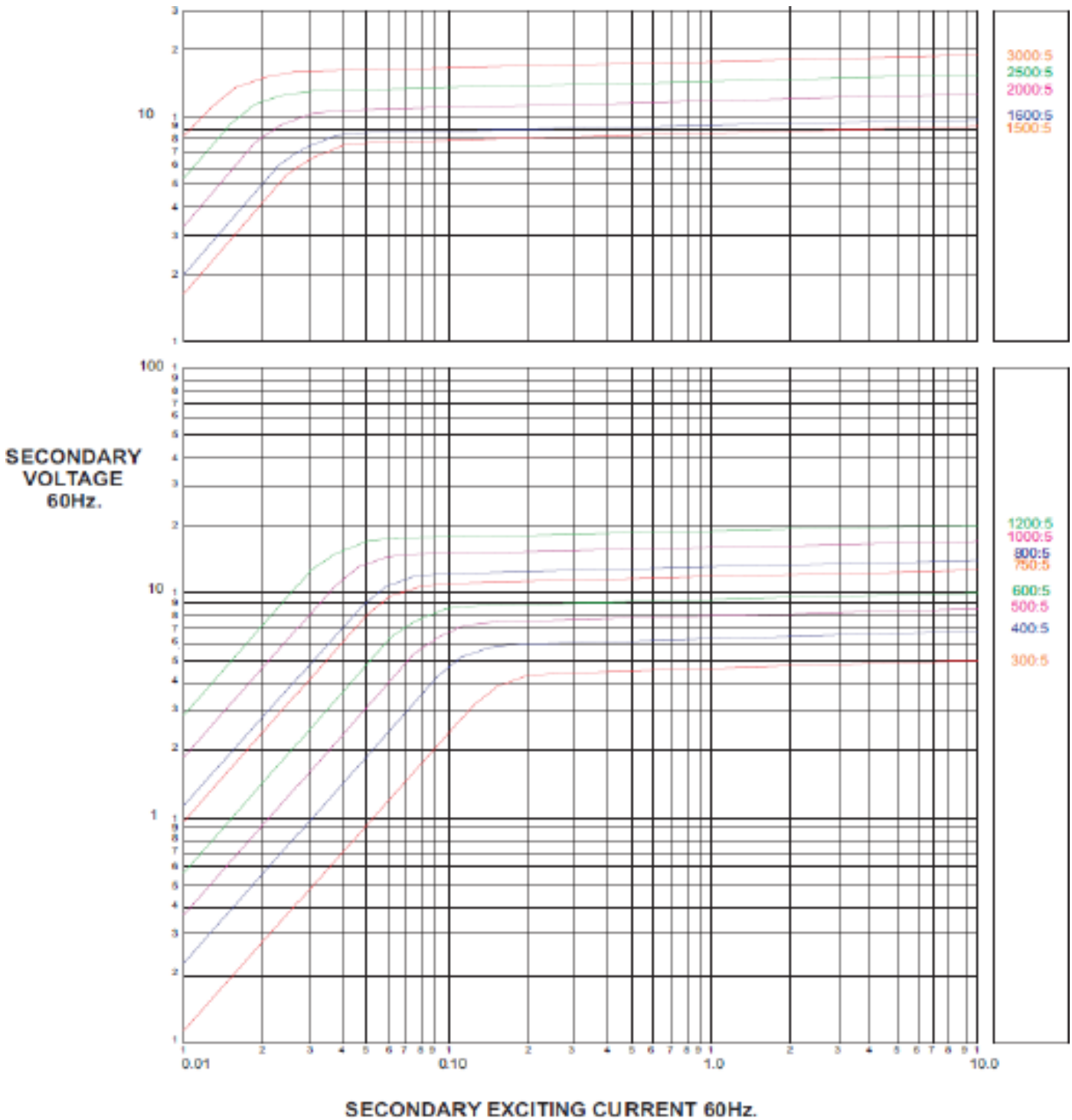


L = 16awg Lead Wire Y = Female Terminals T = Male Terminals

*X is to be replaced with "L", "Y" or "T" for terminal or lead designation.

*Note-Mounting brackets for the 19SHT and 19SHL are sold separately (Part Number 1121A00022)

TOROIDAL CURRENT TRANSFORMERS
 Model 19 Ratio to 5 (Window Size: 4.25" Dia.)



Rev F 06 12 2024