

TOROIDAL CURRENT TRANSFORMERS

Model 193 Ratio to 5 (Window Size: 2.13" Dia.)

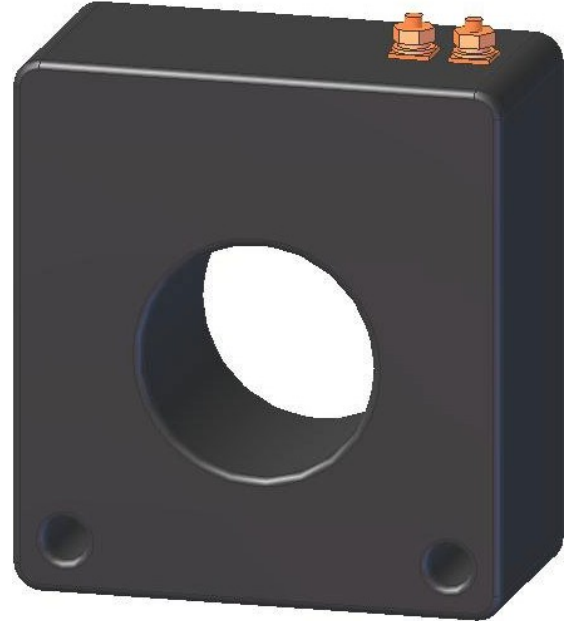
Application: Used with ammeters, watt meters and cross current compensation.

Frequency: 50-400 Hz

Insulation Level: 600 Volts, 10kV BIL Full Wave

Standards: CSA 66.1-06, CSA 66.2-06, IEEE C 57.13, and UL 506

- Flexible leads available for all case configurations. Flexible leads are UL 1015 105°C, C.S.A approved #16 AWG, 24" long standard length. Non-standard lengths are available upon request.
- Terminals are brass studs No. 8-32 UNC with one flat washer, one lock washer and one nut each. Terminals are only available on the square case configuration.
- Mounting brackets kits available when required.
- Approximate weight: 4.25 lbs.



Catalog Number	Current Ratio	Relay Class	ANSI Metering Class at 60 Hz					Secondary Winding Resistance (Ω @ 75°C)	Continuous Thermal Rating Factor	
			B0.1	B0.2	B0.5	B0.9	B1.8		@ 30°C	@ 55°C
193-101	100:5	—	1.2	1.2	4.8	-	-	0.024	2.00	2.00
193-151	150:5	—	0.6	0.6	1.2	2.4	4.8	0.038	2.00	2.00
193-201	200:5	—	0.3	0.3	1.2	1.2	2.4	0.071	2.00	2.00
193-251	250:5	C10	0.3	0.3	0.6	1.2	2.4	0.072	2.00	1.50
193-301	300:5	C10	0.3	0.3	0.3	0.6	1.2	0.082	2.00	1.50
193-401	400:5	C10	0.3	0.3	0.3	0.3	0.6	0.142	1.50	1.33
193-501	500:5	C10	0.3	0.3	0.3	0.3	0.6	0.159	1.50	1.33
193-601	600:5	C10	0.3	0.3	0.3	0.3	0.6	0.191	1.50	1.00

TOROIDAL CURRENT TRANSFORMERS
 Model 193 Ratio to 5 (Window Size: 2.13" Dia.)

