

TOROIDAL CURRENT TRANSFORMERS

Model 194 Ratio to 5 (Window Size: 2.50" Dia.)

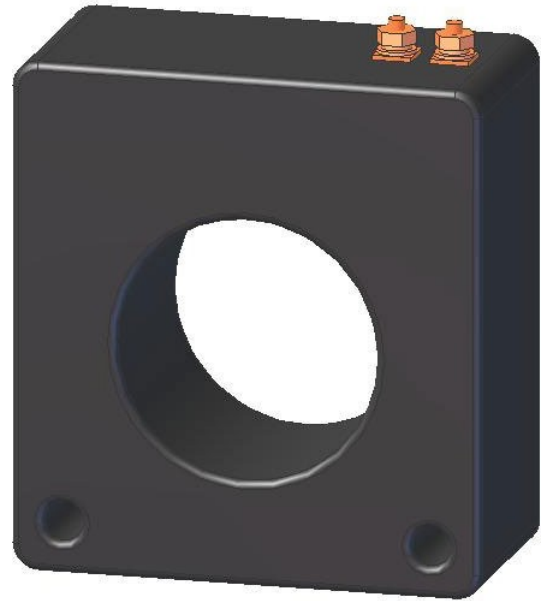
Application: Used with ammeters, watt meters and cross current compensation.

Frequency: 50-400 Hz

Insulation Level: 600 Volts, 10kV BIL Full Wave

Standards: CSA 66.1-06, CSA 66.2-06, IEEE C 57.13, and UL 506

- Flexible leads available for all case configurations. Flexible leads are UL 1015 105°C, C.S.A approved #16 AWG, 24" long standard length. Non-standard lengths are available upon request.
- Terminals are brass studs No. 8-32 UNC with one flat washer, one lock washer and one nut each. Terminals are only available on the square case configuration.
- Mounting brackets kits available when required.
- Approximate weight: 3.5 lbs.



Catalog Number	Current Ratio	Relay Class	ANSI Metering Class at 60 Hz					Secondary Winding Resistance (Ω @ 75°C)	Continuous Thermal Rating Factor	
			B0.1	B0.2	B0.5	B0.9	B1.8		@ 30°C	@ 55°C
194-500	50:5	—	2.4	—	—	—	—	—	—	—
194-101	100:5	—	1.2	2.4	4.8	-	-	0.033	2.00	2.00
194-151	150:5	—	0.6	1.2	2.4	4.8	4.8	0.050	2.00	2.00
194-201	200:5	—	0.6	0.6	1.2	2.4	4.8	0.065	2.00	2.00
194-251	250:5	—	0.3	0.3	0.6	1.2	2.4	0.084	2.00	1.50
194-301	300:5	—	0.3	0.3	0.6	1.2	2.4	0.101	2.00	1.50
194-401	400:5	C10	0.3	0.3	0.3	0.6	1.2	0.104	2.00	1.50
194-501	500:5	C10	0.3	0.3	0.3	0.3	0.6	0.133	1.50	1.00
194-601	600:5	C10	0.3	0.3	0.3	0.6	0.6	0.180	1.50	1.00
194-751	750:5	C10	0.3	0.3	0.3	0.3	0.3	0.283	1.00	0.80
194-801	800:5	C10	0.3	0.3	0.3	0.3	0.3	0.302	1.00	0.80
194-102	1000:5	—	0.3	0.3	0.3	0.3	0.3	0.354	1.00	0.80
194-122	1200:5	—	0.3	0.3	0.3	0.3	0.3	0.425	1.00	0.80
194-152	1500:5	—	0.3	0.3	0.3	0.3	0.3	0.531	1.00	0.60
194-162	1600:5	—	0.3	0.3	0.3	0.3	0.3	0.566	0.80	0.60

TOROIDAL CURRENT TRANSFORMERS
 Model 194 Ratio to 5 (Window Size: 2.50" Dia.)

