

TOROIDAL CURRENT TRANSFORMERS

Model 195 Ratio to 5 (Window Size: 3.06" Dia.)

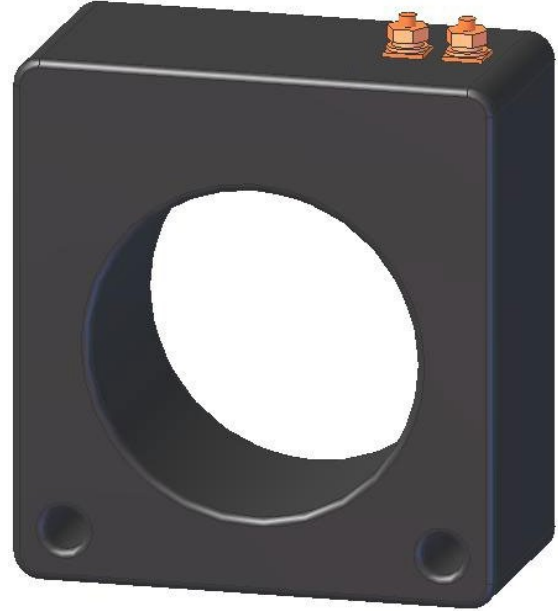
Application: Used with ammeters, watt meters and cross current compensation.

Frequency: 50-400 Hz

Insulation Level: 600 Volts, 10kV BIL Full Wave

Standards: CSA 66.1-06, CSA 66.2-06, IEEE C 57.13, and UL 506

- Flexible leads available for all case configurations. Flexible leads are UL 1015 105°C, C.S.A approved #16 AWG, 24" long standard length. Non-standard lengths are available upon request.
- Terminals are brass studs No. 8-32 UNC with one flat washer, one lock washer and one nut each. Terminals are only available on the square case configuration.
- Mounting brackets kits available when required.
- Approximate weight: 2.25 lbs.



Catalog Number	Current Ratio	Relay Class	ANSI Metering Class at 60 Hz					Secondary Winding Resistance (Ω @ 75°C)	Continuous Thermal Rating Factor	
			B0.1	B0.2	B0.5	B0.9	B1.8		@ 30°C	@ 55°C
195-201	200:5	-	0.6	1.2	2.4	4.8	-	0.040	2.00	2.00
195-251	250:5	-	0.3	0.6	1.2	2.4	4.8	0.069	2.00	2.00
195-301	300:5	-	0.3	0.6	1.2	2.4	2.4	0.068	2.00	2.00
195-401	400:5	-	0.3	0.3	0.6	1.2	2.4	0.110	2.00	1.50
195-501	500:5	-	0.3	0.3	0.3	0.6	1.2	0.105	2.00	1.50
195-601	600:5	-	0.3	0.3	0.3	0.6	1.2	0.151	1.50	1.33
195-751	750:5	-	0.3	0.3	0.3	0.6	0.6	0.197	1.50	1.00
195-801	800:5	-	0.3	0.3	0.3	0.6	0.6	0.265	1.00	0.80
195-102	1000:5	-	0.3	0.3	0.3	0.6	0.6	0.209	1.00	0.80
195-122	1200:5	-	0.3	0.3	0.3	0.3	0.6	0.301	1.00	0.60
195-152	1500:5	-	0.3	0.3	0.3	0.3	0.6	0.471	1.00	0.60
195-162	1600:5	-	0.3	0.3	0.3	0.3	0.6	0.502	1.00	0.60
195-202	2000:5	-	0.3	0.3	0.3	0.3	0.3	0.782	0.60	0.60

TOROIDAL CURRENT TRANSFORMERS
 Model 195 Ratio to 5 (Window Size: 3.06" Dia.)

