

THREE PHASE CURRENT TRANSFORMER

Model 3P41 Ratio to 5 (Window Size: 2.00" Dia.)

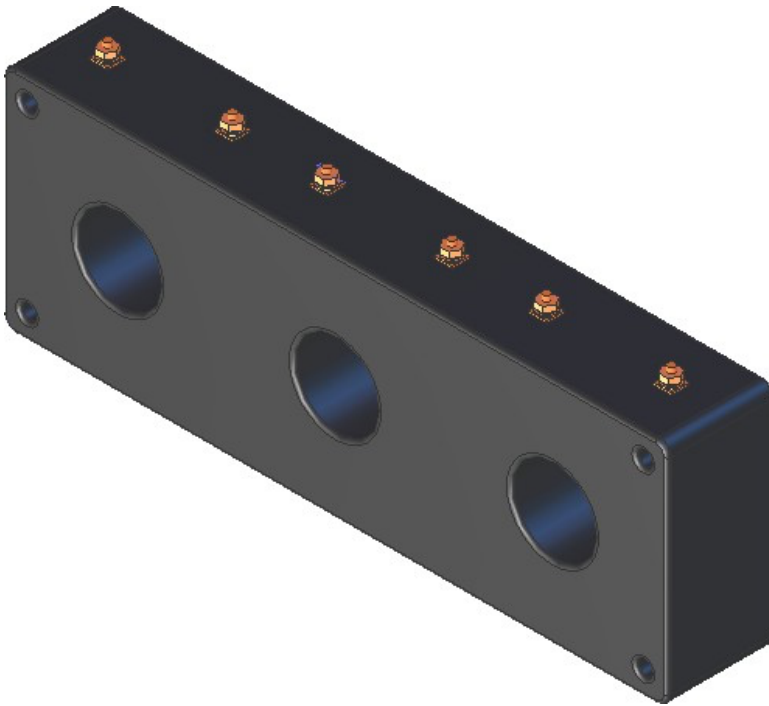
Application: Used with 3 phase metering and overload protection.

Frequency: 50-400 Hz

Insulation Level: 600 Volts, 10kV BIL Full Wave

Standards: CSA 66.1-06, CSA 66.2-06, and UL 506

- Terminals are brass. See page 2 for available Stud and Female hardware options.
- Approximate weight: 12 lbs.

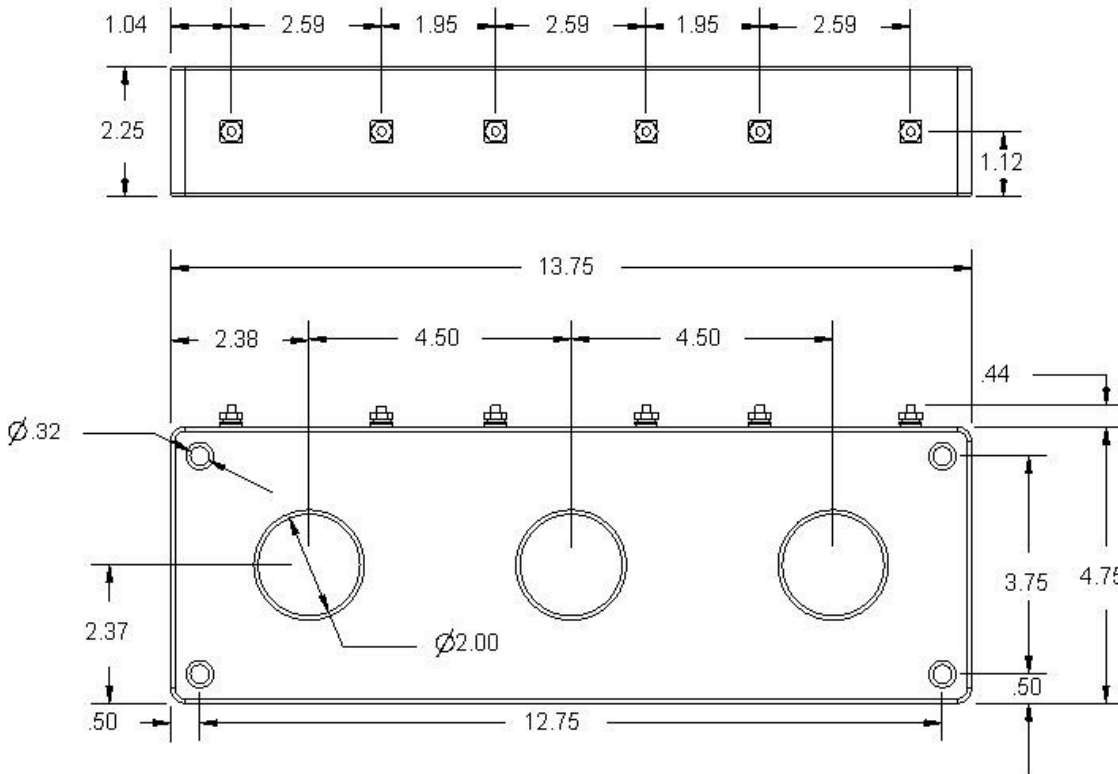


Catalog Number	Current Ratio	Relay Class	ANSI Metering Class at 60 Hz					Secondary Winding Resistance (Ω @ 75°C)	Continuous Thermal Rating Factor	
			B0.1	B0.2	B0.5	B0.9	B1.8		@ 30°C	@ 55°C
3P41-101	100:5	-	1.2	1.2	2.4	-	-	0.030	2.0	2.0
3P41-151	150:5	-	0.6	0.6	1.2	2.4	-	0.045	2.0	2.0
3P41-201	200:5	-	0.3	0.6	1.2	2.4	2.4	0.075	2.0	2.0
3P41-251	250:5	C10	0.3	0.3	0.6	1.2	2.4	0.094	2.0	1.5
3P41-301	300:5	C10	0.3	0.3	0.3	0.6	1.2	0.090	2.0	1.5
3P41-401	400:5	C10	0.3	0.3	0.3	0.3	0.6	0.151	1.5	1.33
3P41-501	500:5	C20	0.3	0.3	0.3	0.3	0.6	0.149	1.5	1.33
3P41-601	600:5	C20	0.3	0.3	0.3	0.3	0.6	0.179	1.5	1.0

Rev F 06 12 2024

THREE PHASE CURRENT TRANSFORMER

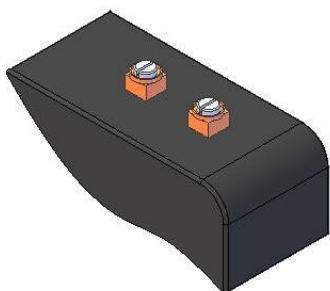
Model 3P41 Ratio to 5 (Window Size: 2.00" Dia.)



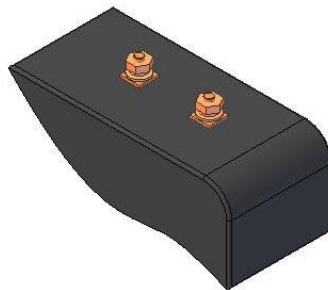
ORDERING NOTE*: When ordering, use the prefix below to indicate unit designation/configuration. (i.e. 3p41T-101 or 3p41-101Y)

T = Male (Brass studs No. 10-32 UNC with one flat washer, one lock washer and one nut each)

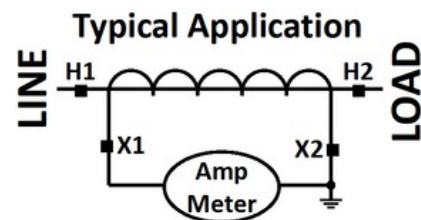
Y = Female (Brass with one Cup washer, one lock washer and one No. 8-32 UNC binding head screw each)



Y = Female Terminals



T = Male Terminals



*X is to be replaced with "Y" or "T" for terminal or lead designation.