

THREE PHASE CURRENT TRANSFORMER

Model 3P43 Ratio to 5 (Window Size: 3.00" Dia.)

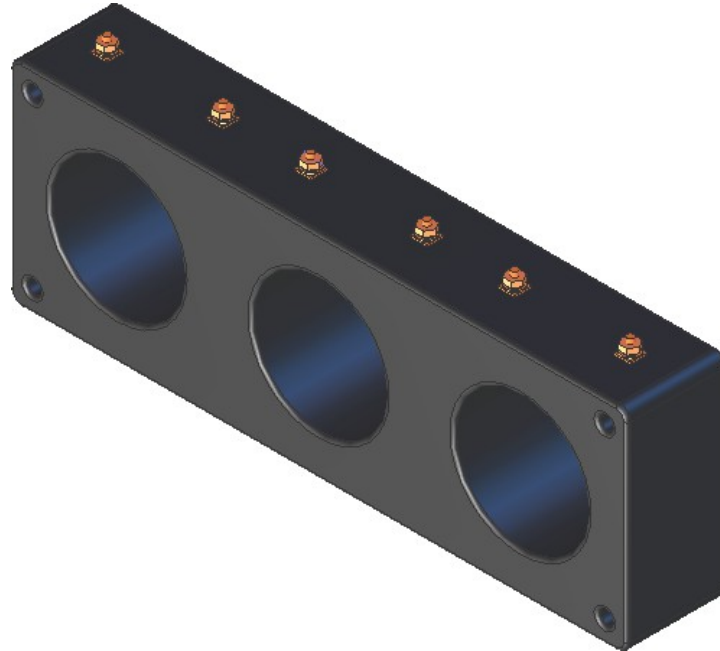
Application: Used with 3 phase metering and overload protection.

Frequency: 50-400 Hz

Insulation Level: 600 Volts, 10kV BIL Full Wave

Standards: CSA 66.1-06, CSA 66.2-06, and UL 506

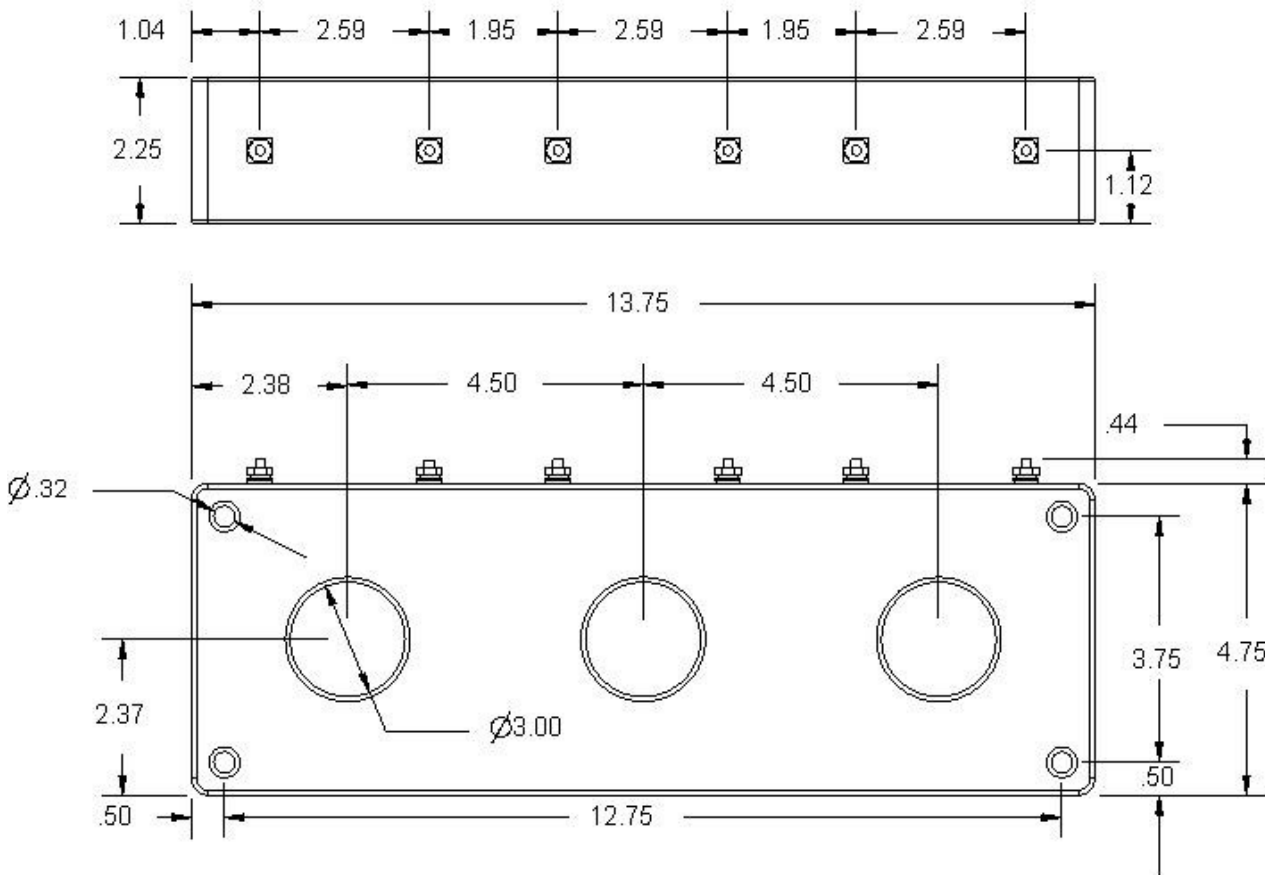
- Terminals are brass. See page 2 for available Stud and Female hardware options.
- Approximate weight: 8.5 lbs.



Catalog Number	Current Ratio	Relay Class	ANSI Metering Class at 60 Hz					Secondary Winding Resistance (Ω @ 75°C)	Continuous Thermal Rating Factor	
			B0.1	B0.2	B0.5	B0.9	B1.8		@ 30°C	@ 55°C
3P43-201	200:5	-	0.6	1.2	2.4	-	-	0.049	2.0	2.0
3P43-251	250:5	-	0.3	0.6	1.2	2.4	-	0.077	2.0	2.0
3P43-301	300:5	-	0.3	0.6	1.2	2.4	-	0.073	2.0	2.0
3P43-401	400:5	-	0.3	0.3	0.6	1.2	-	0.123	2.0	1.5
3P43-501	500:5	-	0.3	0.3	0.6	0.6	1.2	0.122	2.0	1.5
3P43-601	600:5	-	0.3	0.3	0.3	0.6	1.2	0.184	1.5	1.33
3P43-751	750:5	-	0.3	0.3	0.3	0.6	1.2	0.182	1.5	1.33
3P43-801	800:5	-	0.3	0.3	0.3	0.6	1.2	0.246	1.0	1.0
3P43-102	1000:5	-	0.3	0.3	0.3	0.3	0.6	0.307	1.0	1.0
3P43-122	1200:5	-	0.3	0.3	0.3	0.6	1.2	0.315	1.0	0.8
3P43-152	1500:5	-	0.3	0.3	0.3	0.3	1.2	0.395	1.0	0.8
3P43-162	1600:5	-	0.3	0.3	0.3	0.3	0.6	0.428	1.0	0.6
3P43-202	2000:5	-	0.3	0.3	0.3	0.3	0.6	0.532	0.8	0.6

THREE PHASE CURRENT TRANSFORMER

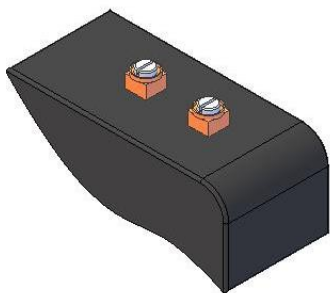
Model 3P43 Ratio to 5 (Window Size: 3.00" Dia.)



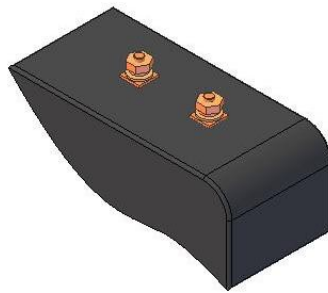
ORDERING NOTE*: When ordering, use the prefix below to indicate unit designation/configuration. (i.e. 3P43-101 or 3P43-101Y)

T = Male (Brass studs No. 10-32 UNC with one flat washer, one lock washer and one nut each)

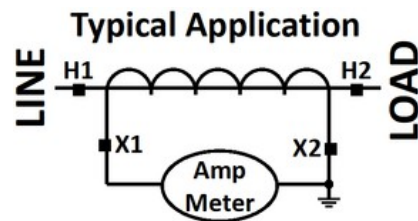
Y = Female (Brass with one Cup washer, one lock washer and one No. 8-32 UNC binding head screw each)



Y = Female Terminals



T = Male Terminals



*X is to be replaced with "Y" or "T" for terminal or lead designation.