

TOROIDAL CURRENT TRANSFORMERS

Model 5 Ratio to 1 (Window Size: 1.56" Dia.)

Application: Used with ammeters, watt meters and cross current compensation.

Frequency: 50-400 Hz

Insulation Level: 600 Volts, 10Kv BIL Full Wave

Standards: CSA 66.1-06, CSA 66.2-06, IEEE C 57.13, and UL 506

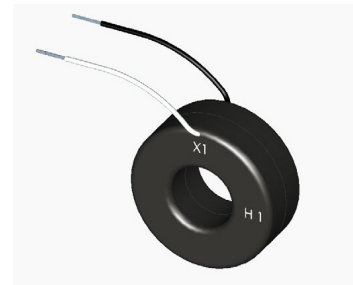
- Flexible leads available for all case configurations. Flexible leads are UL 1015 105°C, C.S.A approved #16 AWG, 24" long standard length. Non-standard lengths are available upon request.
- Terminals are brass. See page 2 for available Stud and Female hardware options.
- Terminals are only available on the square case configuration.
- Mounting bracket kits for the Model 5SHT or 5SHL are available.
- Approximate weight: 0.5 lbs.



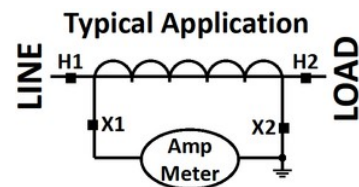
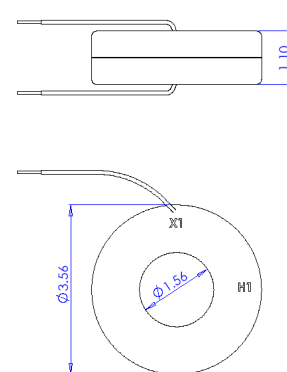
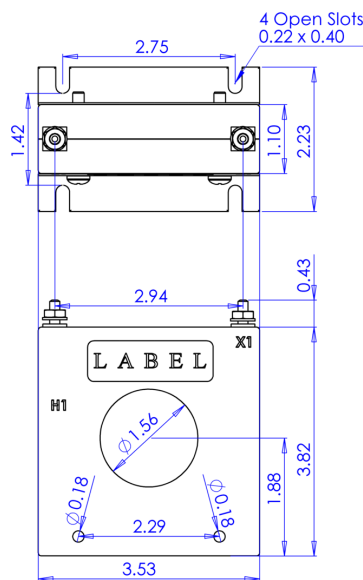
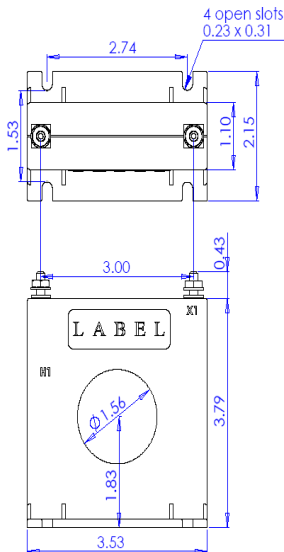
5SFT



5SHT



5RL



*Note-Mounting brackets for the 5SHT and 5SHL are sold separately (Part Number 1121A00020-1)

TOROIDAL CURRENT TRANSFORMERS

Model 5 Ratio to 1 (Window Size: 1.56" Dia.)

| Catalog Number | Current Ratio | Models 5SFT, 5SHT, 5RL, 5SFY, 5SHY ANSI Metering Class at 60 Hz | | | | |
|----------------|---------------|--|------|------|------|------|
| | | B0.1 | B0.2 | B0.5 | B0.9 | B1.8 |
| 5 **--101-1 | 100:1 | 1.2 | — | — | — | — |
| 5 **--121-1 | 120:1 | 1.2 | — | — | — | — |
| 5 **--151-1 | 150:1 | 1.2 | 1.2 | — | — | — |
| 5 **--201-1 | 200:1 | 0.6 | 0.6 | 2.4 | — | — |
| 5 **--251-1 | 250:1 | 0.3 | 0.3 | 1.2 | 2.4 | — |
| 5 **--301-1 | 300:1 | 0.3 | 0.3 | 1.2 | 2.4 | — |
| 5 **--401-1 | 400:1 | 0.3 | 0.3 | 0.6 | 1.2 | 2.4 |
| 5 **--501-1 | 500:1 | 0.3 | 0.3 | 0.3 | 0.6 | 2.4 |
| 5 **--601-1 | 600:1 | 0.3 | 0.3 | 0.3 | 0.6 | 2.4 |
| 5 **--751-1 | 750:1 | 0.3 | 0.3 | 0.3 | 0.6 | 2.4 |
| 5 **--801-1 | 800:1 | 0.15 | 0.3 | 0.3 | 0.6 | 1.2 |
| 5 **--102-1 | 1000:1 | 0.15 | 0.15 | 0.15 | 0.3 | 0.6 |
| 5 **--122-1 | 1200:1 | 0.15 | 0.15 | 0.15 | 0.3 | 0.6 |

ORDERING NOTE*: When ordering, use the prefix below to indicate unit designation/configuration. (i.e. 5SFT-101-1)

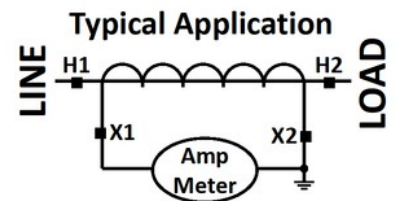
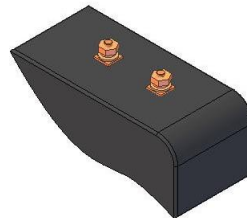
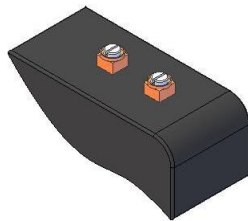
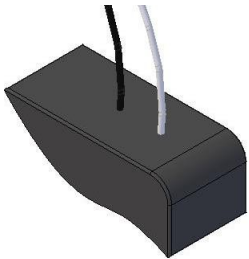
RL = Thin Round Case with Standard 24" leads (Non-standard lengths are available upon request)

SHX* = Square Case with mounting holes

SFX* = Square Case w/molded feet and terminals

T = Male (Brass studs No. 8-32 UNC with one flat washer, one lock washer and one nut each)

Y = Female (Brass with one Cup washer, one lock washer and one No. 8-32 UNC binding head screw each)



L = 16awg Lead Wire Y = Female Terminals T = Male Terminals

*X is to be replaced with "L", "Y" or "T" for terminal or lead designation.