

TORODIAL CURRENT TRANSFORMERS

Model 6 Ratio to 5 (Window Size: 2.06" Dia.)

Catalog Number	Current Ratio	Models 6SFT, 6SHT, 6RL, 6SFY, 6SHY	
		Accuracy at 60 Hz	Burden VA at 60 Hz
6 **--101	100:5	± 2%	2.0
6 **--151	150:5	± 1%	5.0
6 **--201	200:5	± 1%	5.0
6 **--251	250:5	± 1%	7.5
6 **--301	300:5	± 1%	12.5
6 **--401	400:5	± 1%	15.0
6 **--501	500:5	± 1%	25.0
6 **--601	600:5	± 1%	30.0
6 **--751	750:5	± 1%	25.0
6 **--801	800:5	± 1%	25.0
6 **--102	1000:5	± 1%	35.0
6 **--122	1200:5	± 1%	40.0
6 **--152	1500:5	± 1%	50.0

ORDERING NOTE*: When ordering, use the prefix below to indicate unit designation/configuration. (i.e. 6SFT-101)

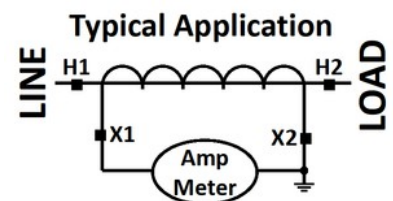
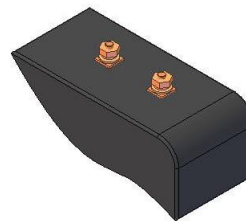
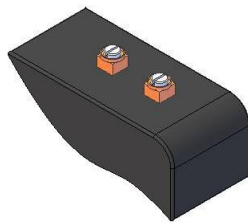
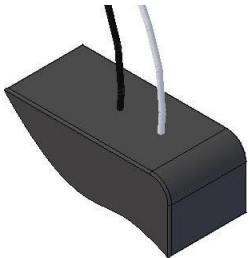
RL = Thin Round Case with Standard 24" leads (Non-standard lengths are available upon request)

SHX* = Square Case with mounting holes

SFX* = Square Case w/molded feet and terminals

T = Male (Brass studs No. 8-32 UNC with one flat washer, one lock washer and one nut each)

Y = Female (Brass with one Cup washer, one lock washer and one No. 8-32 UNC binding head screw each)



L = 16awg Lead Wire Y = Female Terminals T = Male Terminals

*X is to be replaced with "L", "Y" or "T" for terminal or lead designation.