

RECTANGLE/SPLIT CORE CURRENT TRANSFORMERS

Model 600 Ratio to 5 (Window Size: 2" X 5.5")

Application: Used for energy management systems and instrumentation.

Frequency: 50-400 Hz

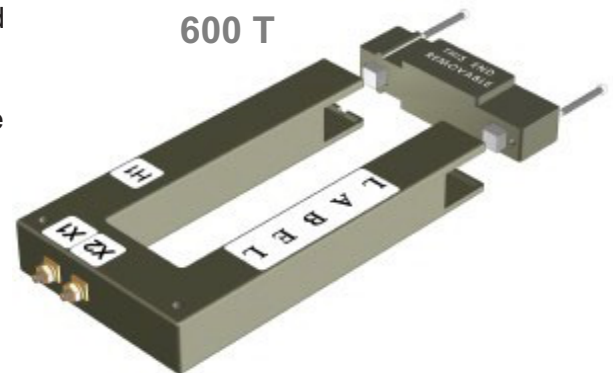
Insulation Level: 600 Volts, 10Kv BIL Full Wave

Standards: CSA 66.1-06, CSA 66.2-06, and UL 506

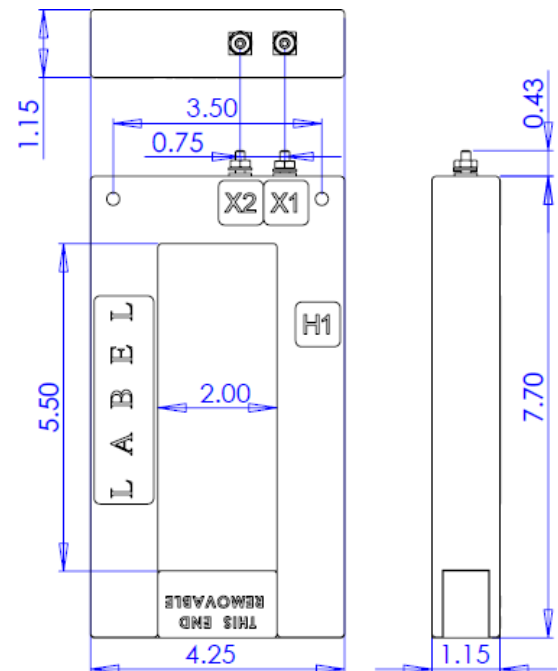
- Flexible leads available for all case configurations. Flexible leads are UL 1015 105°C, C.S.A approved #16 AWG, 24" long standard length. Non-standard lengths are available upon request.
- Terminals are brass. See page 2 for available Stud and Female hardware options.
- Continuous Thermal Current Rating Factor: 1.33 @ 30 Deg. C. Amb.: 1.0 @55 Deg. C. Amb.
- Approximate weight: 1.5 lbs.

This transformer is designed to have the capability to be assembled around existing bus bars or conductors. To install, simply remove the cover labeled "This End Removable". Remove the two (2) bolts holding the core in place and then remove the bottom section of the transformer. To install, just reverse these steps.

- Proper safety precautions must be followed during the installation by a trained electrical.
- Never install while the bus is energized.
- Before energizing the current transformer, secondary must have a burden or be short circuited.



Catalog Number	Current Ratio	V.A. +/- 1% Class	ANSI Metering Class at 60Hz		
			B0.1	B0.2	B0.5
600*-401	400:5	1.5	2.4	4.8	----
600*-501	500:5	2.0	2.4	4.8	----
600*-601	600:5	2.5	2.4	2.4	----
600*-801	800:5	5.0	1.2	1.2	2.4
600*-102	1000:5	7.5	1.2	1.2	2.4
600*-122	1200:5	15.0	0.6	1.2	1.2
600*-152	1500:5	20.0	0.6	0.6	1.2
600*-162	1600:5	20.0	0.6	0.6	1.2
600*-202	2000:5	30.0	0.6	0.6	0.6



Rev F 06 12 2024

RECTANGLE/SPLIT CORE CURRENT TRANSFORMERS

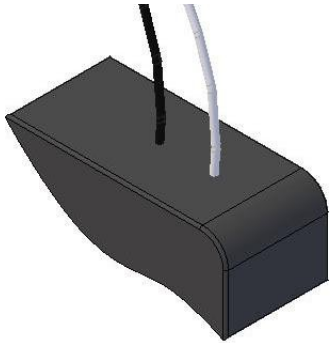
Model 600 Ratio to 5 (Window Size: 2" X 5.5")

ORDERING NOTE*: When ordering, use the prefix below to indicate unit designation/configuration. (i.e. 600T-101 or 600L-101)

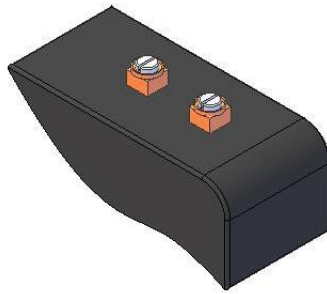
L = Flexible leads -UL 1015 105°C, C.S.A approved #16 AWG, 24" long standard length. Non-standard lengths are available upon request. (Non-standard lengths are available upon request)

T = Male (Brass studs No. 8-32 UNC with one flat washer, one lock washer and one nut each)

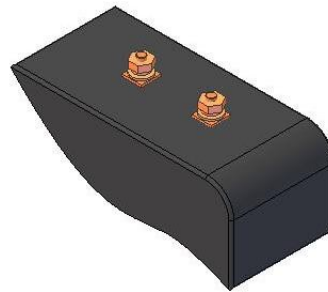
Y = Female (Brass with one Cup washer, one lock washer and one No. 8-32 UNC binding head screw each)



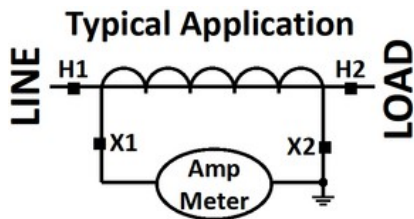
L = 16awg Lead Wire



Y = Female Terminals



T = Male Terminals



*X is to be replaced with "L", "Y" or "T" for terminal or lead designation.