

## RECTANGLE/SPLIT CORE CURRENT TRANSFORMERS

Model 606 Ratio to 5 (Window Size: 2.75" X 2.70")

**Application:** Used for energy management systems and instrumentation.

**Frequency:** 50-400 Hz

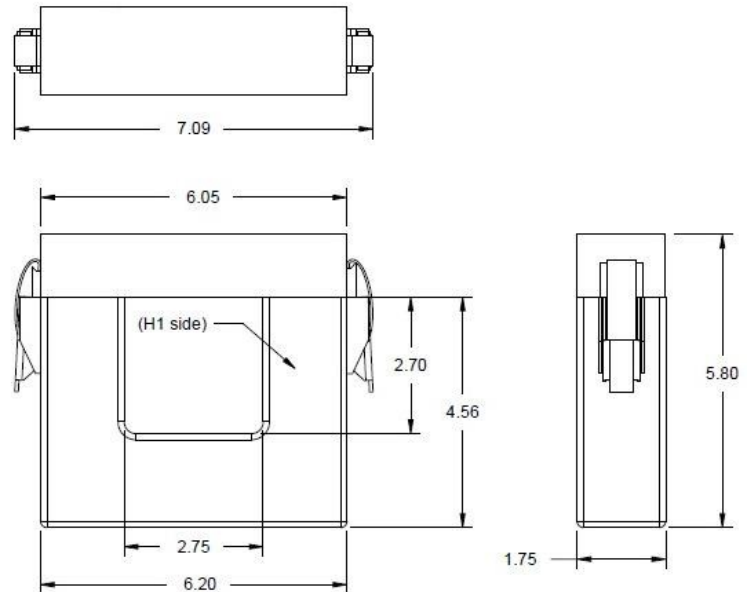
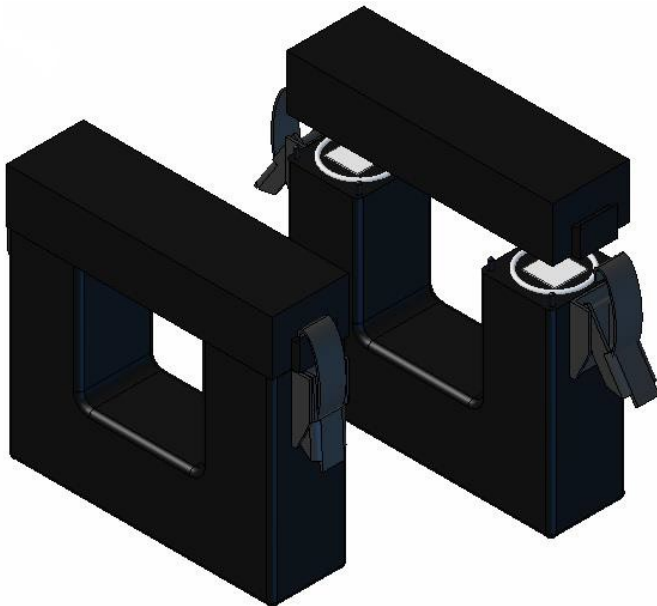
**Insulation Level:** 600 Volts, 10Kv BIL Full Wave

**Standards:** CSA 66.1-06, CSA 66.2-06, IEEE C 57.13, and UL 506

- Secondary Cable: Shielded #16 AWG, 72" long. Direct Burial, U.V. Res. U.L. Type TC. Non-standard lengths are available upon request.
- Approximate weight: 5 lbs.

This current transformer is a weatherproof design suitable for use outdoor. The transformer cases are UV stabilized thermoplastic and filled with polyurethane resin. The mating surfaces of the transformer case are protected by a gasket. Clamps are made of steel for extra durability.

- Designed for assembly to an existing electrical installation without the need for dismantling the primary bus or cables.
- Proper safety precautions must be followed during the installation by a trained electrical. Never install while the bus is energized.
- Before energizing the current transformer, secondary must have a burden or be short circuited.



All dimensions are +/- 0.05in.

Rev F 06 12 2024

## RECTANGLE/SPLIT CORE CURRENT TRANSFORMERS

Model 606 Ratio to 5 (Window Size: 2.75" X 2.70")

Catalog Number	Current Ratio	Burden VA at 60Hz	Accuracy at 60 Hz	Continuous Thermal Rating Factor	
				at 30°C	at 55°C
606-201	200:5	2	2%	1.33	1.00
606-251	250:5	2	2%	1.33	1.00
606-301	300:5	3	2%	1.33	1.00
606-351	350:5	3.5	1%	1.33	1.00
606-401	400:5	4	1%	1.33	1.00
606-501	500:5	6	1%	1.33	1.00
606-601	600:5	8	1%	1.33	1.00
606-751	750:5	10	1%	1.33	1.00
606-801	800:5	12	1%	1.33	1.00
606-102	1000:5	15	1%	1.33	1.00
606-122	1200:5	20	1%	1.33	1.00

