

# RECTANGLE/SPLIT CORE CURRENT TRANSFORMERS

## Model 617 Ratio to 5 (Window Size: 2" X 3.5")

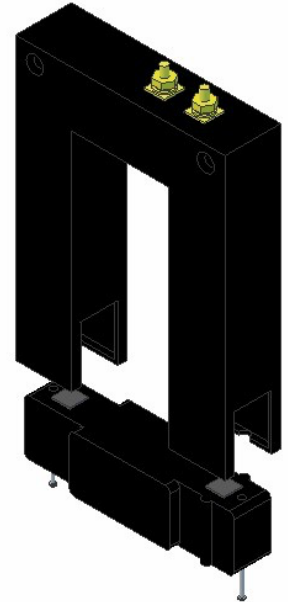
**Application:** Used for energy management systems and instrumentation.

**Frequency:** 50-400 Hz

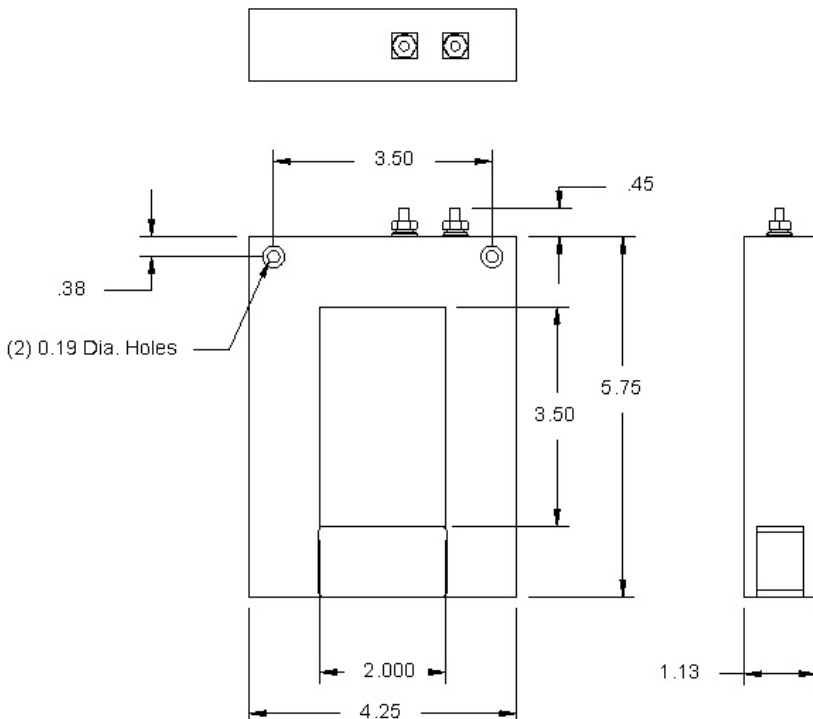
**Insulation Level:** 600 Volts, 10Kv BIL Full Wave

**Standards:** CSA 66.1-06, CSA 66.2-06, and UL 506

- Flexible leads available for all case configurations. Flexible leads are UL 1015 105°C, C.S.A approved #16 AWG, 24" long standard length. Non-standard lengths are available upon request.
- Terminals are brass. See page 2 for available Stud and Female hardware options.
- Continuous Thermal Current Rating Factor: 1.33 @ 30 Deg. C. Amb.: 1.0 @55 Deg. C. Amb.
- Approximate weight: 1.2 lbs.



Catalog Number	Current Ratio	V.A. +/- 1% Class	ANSI Metering Class at 60Hz		
			B0.1	B0.2	B0.5
617*-401	400:5	1.5	2.4	4.8	--
617*-501	500:5	2.0	2.4	4.8	----
617*-601	600:5	2.5	2.4	2.4	----
617*-801	800:5	5.0	1.2	1.2	2.4
617*-102	1000:5	7.5	1.2	1.2	2.4
617*-122	1200:5	15.0	0.6	1.2	1.2



Rev F 06 12 2024

## RECTANGLE/SPLIT CORE CURRENT TRANSFORMERS

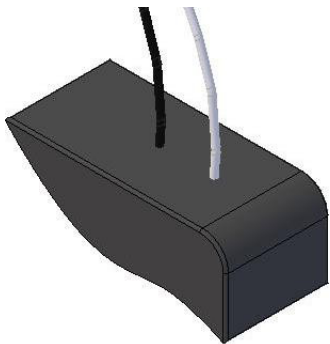
Model 617 Ratio to 5 (Window Size: 2" X 3.5")

**ORDERING NOTE\*:** When ordering, use the prefix below to indicate unit designation/configuration. (i.e. 617T-101 or 617L-101)

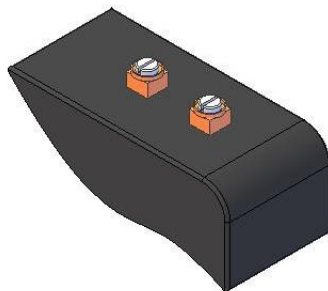
L = Flexible leads -UL 1015 105°C, C.S.A approved #16 AWG, 24" long standard length. Non-standard lengths are available upon request. (Non-standard lengths are available upon request)

T = Male (Brass studs No. 8-32 UNC with one flat washer, one lock washer and one nut each)

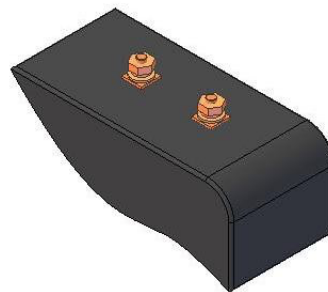
Y = Female (Brass with one Cup washer, one lock washer and one No. 8-32 UNC binding head screw each)



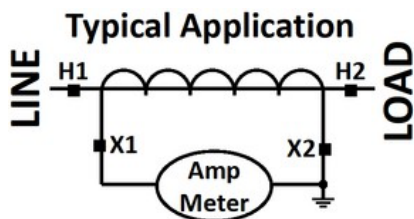
L = 16awg Lead Wire



Y = Female Terminals



T = Male Terminals



\*X is to be replaced with "L", "Y" or "T" for terminal or lead designation.