



## TOROIDAL CURRENT TRANSFORMERS

### Model 7 Ratio to 1 (Window Size: 2.50" Dia.)

Catalog Number	Current Ratio	ANSI METERING CLASS AT 60 HZ				
		B0.1	B0.2	B0.5	B0.9	B1.8
7 **--101-1	100:1	1.2	-	-	-	-
7 **--121-1	120:1	1.2	1.2	-	-	-
7 **--151-1	150:1	0.6	1.2	2.4	-	-
7 **--201-1	200:1	0.6	0.6	2.4	-	-
7 **--251-1	250:1	0.6	0.6	2.4	-	-
7 **--301-1	300:1	0.6	0.6	1.2	2.4	-
7 **--401-1	400:1	0.3	0.3	0.6	1.2	2.4
7 **--501-1	500:1	0.3	0.3	0.6	0.6	2.4
7 **--601-1	600:1	0.3	0.3	0.3	0.6	1.2
7 **--751-1	750:1	0.15	0.3	0.3	0.6	1.2
7 **--801-1	800:1	0.15	0.15	0.3	0.6	1.2
7 **--102-1	1000:1	0.15	0.15	0.15	0.15	0.3
7 **--122-1	1200:1	0.15	0.15	0.15	0.15	0.3
7 **--152-1	1500:1	0.15	0.15	0.15	0.15	0.3
7 **--182-1	1800:1	0.15	0.15	0.15	0.15	0.3
7 **--202-1	2000:1	0.15	0.15	0.15	0.15	0.15
7 **--252-1	2500:1	0.15	0.15	0.15	0.15	0.15

**ORDERING NOTE\*:** When ordering, use the prefix below to indicate unit designation/configuration. (i.e. 7SFT-101-1)

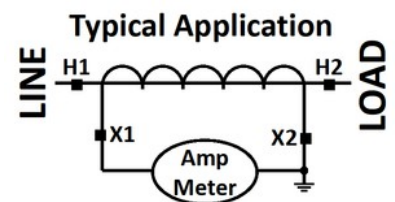
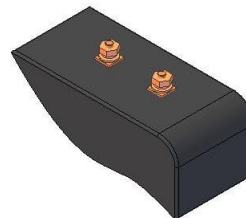
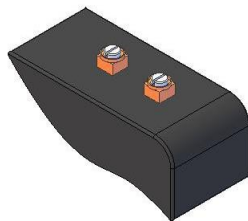
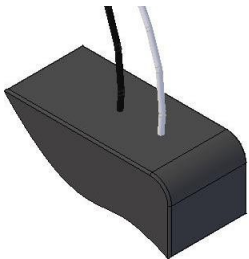
RL = Thin Round Case with Standard 24" leads (Non-standard lengths are available upon request)

SHX\* = Square Case with mounting holes

SFX\* = Square Case w/molded feet and terminals

T = Male (Brass studs No. 8-32 UNC with one flat washer, one lock washer and one nut each)

Y = Female (Brass with one Cup washer, one lock washer and one No. 8-32 UNC binding head screw each)



L = 16awg Lead Wire      Y = Female Terminals      T = Male Terminals

\*X is to be replaced with "L", "Y" or "T" for terminal or lead designation.

\*Note-Mounting brackets for the 7SHT and 7SHL are sold separately (Part Number 1121A00021-1)