

VOLTAGE SIGNAL OUTPUT CURRENT TRANSFORMERS

Model CV19 Ratio to 1 (Window Size: 4.25" Dia.)

Application: Generally used to provide 0 - 1.0Vac output with a current input.
 (Other secondary voltages also available)

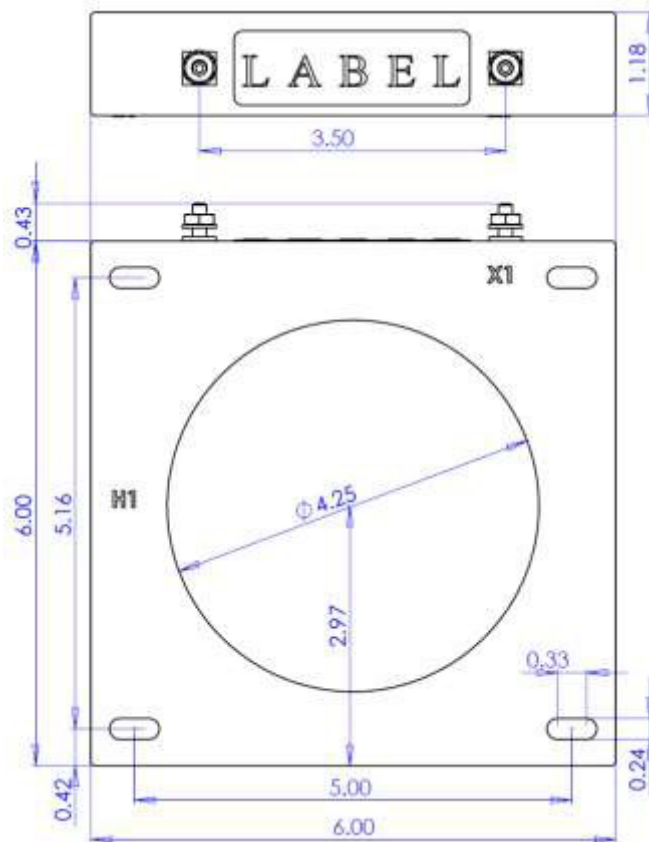
Frequency: 50-400 Hz

Insulation Level: 600 Volts, 10Kv BIL Full Wave

- Terminals are brass. See page 2 for available Stud and Female hardware options.
- Mounting brackets kits for the Model CV19SHT are sold separately. (P/N 1121A00022)
- Approximate weight: 3 lbs.



CV19SHT



VOLTAGE SIGNAL OUTPUT CURRENT TRANSFORMERS

Model CV19 Ratio to 1 (Window Size: 4.25" Dia.)

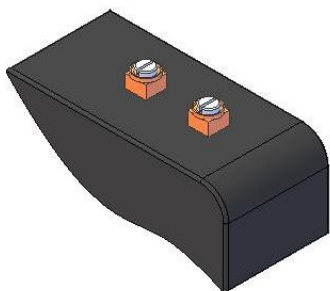
Catalog Number	Primary Current/ Sec. Voltage	Accuracy at 60Hz	TRF @ 30C	TRF @55C
CV19 **-101-1	100A:1V	0.3%	1.0	0.8
CV19 **-121-1	120A:1V	0.3%	1.0	0.8
CV19 **-151-1	150A:1V	0.3%	1.0	0.8
CV19 **-201-1	200A:1V	0.3%	1.0	0.8
CV19 **-251-1	250A:1V	0.3%	1.0	0.8
CV19 **-301-1	300A:1V	0.3%	1.0	0.8
CV19**-401-1	400A:1V	0.3%	1.0	0.8
CV19 **-501-1	500A:1V	0.3%	1.0	0.8
CV19**-601-1	600A:1V	0.3%	1.0	0.8
CV19 **-751-1	750A:1V	0.3%	1.0	0.8
CV18 **-801-1	800A:1V	0.3%	1.0	0.8
CV19 **-102-1	1000A:1V	0.3%	1.0	0.8
CV19 **-122-1	1200A:1V	0.3%	1.0	0.8

ORDERING NOTE*: When ordering, use the prefix below to indicate unit designation/configuration. (i.e. CV19SHT-301-1)

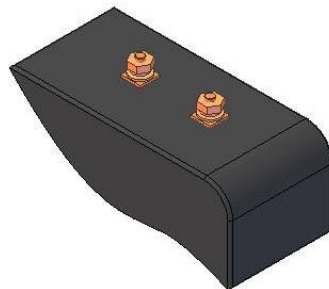
SH-* = Square Case with mounting holes

T = Male (Brass studs No. 8-32 UNC with one flat washer, one lock washer and one nut each.)

Y = Female (Brass with one Cup washer, one lock washer and one No. 8-32 UNC binding head screw each.)



Y = Female Terminals



T = Male Terminals