

# TOROIDAL CURRENT TRANSFORMERS

## Model 5 Ratio to 5 (Window Size: 1.56" Dia.)

**Application:** Used with ammeters, watt meters and cross current compensation.

**Frequency:** 50-400 Hz

**Insulation Level:** 600 Volts, 10Kv BIL Full Wave

**Standards:** CSA 66.1-06, CSA 66.2-06, IEEE C 57.13, and UL 506

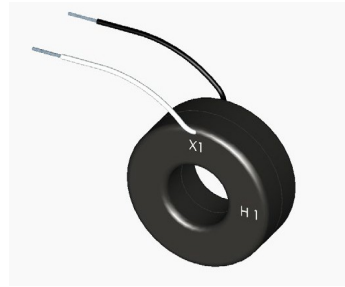
- Flexible leads available for all case configurations. Flexible leads are UL 1015 105°C, C.S.A approved #16 AWG, 24" long standard length. Non-standard lengths are available upon request.
- Terminals are brass. See page 2 for available Stud and Female hardware options.
- Terminals are only available on the square case configuration.
- Mounting brackets kits for the Model 5SHT or 5SHL are available.
- Approximate weight: 0.5 lbs.



5SFT



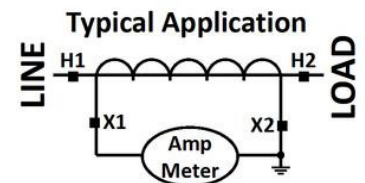
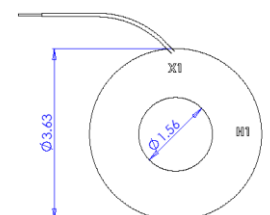
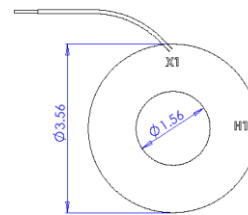
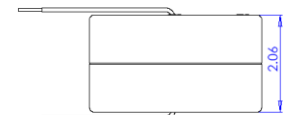
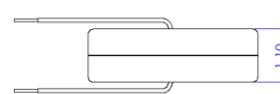
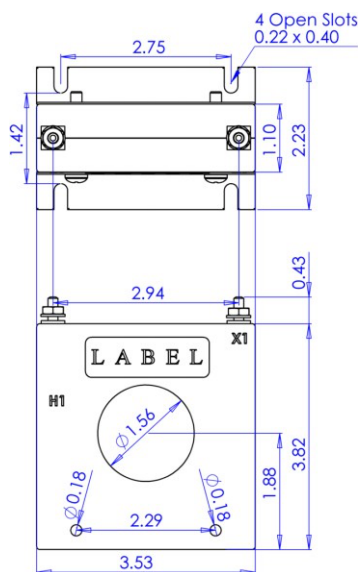
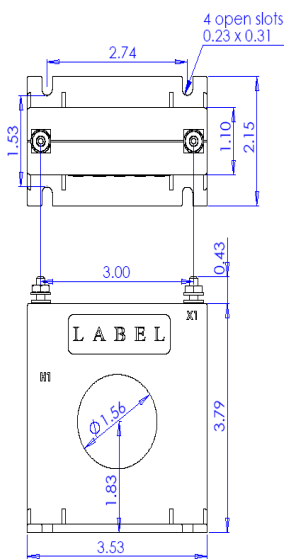
5SHT



5RL



5DRL



\*Note-Mounting brackets for the 5SHT and 5SHL are sold separately (Part Number 1121A00020-1)

## TOROIDAL CURRENT TRANSFORMERS

### Model 5 Ratio to 5 (Window Size: 1.56" Dia.)

| Catalog Number | Current Ratio | Models 5SFT, 5SHT, 5RL |                    | Model 5DRL        |                    |
|----------------|---------------|------------------------|--------------------|-------------------|--------------------|
|                |               | Accuracy at 60 Hz      | Burden VA at 60 Hz | Accuracy at 60 Hz | Burden VA at 60 Hz |
| 5 **--500      | 50:5          | ± 2%                   | 1.0                | ± 2%              | 2.5                |
| 5 **--600      | 60:5          | ± 2%                   | 1.5                | ± 1%              | 2.5                |
| 5 **--750      | 75:5          | ± 2%                   | 1.5                | ± 1%              | 3.5                |
| 5 **--101      | 100:5         | ± 1%                   | 2.0                | ± 1%              | 5.0                |
| 5 **--151      | 150:5         | ± 1%                   | 5.0                | ± 1%              | 10.0               |
| 5 **--201      | 200:5         | ± 1%                   | 5.0                | ± 1%              | 12.5               |
| 5 **--251      | 250:5         | ± 1%                   | 10.0               | ± 1%              | 20.0               |
| 5 **--301      | 300:5         | ± 1%                   | 12.5               | ± 1%              | 25.0               |
| 5 **--401      | 400:5         | ± 1%                   | 12.5               | ± 1%              | 40.0               |
| 5 **--501      | 500:5         | ± 1%                   | 20.0               | ± 1%              | 50.0               |
| 5 **--601      | 600:5         | ± 1%                   | 25.0               | ± 1%              | 60.0               |
| 5 **--751      | 750:5         | ± 1%                   | 25.0               | ± 1%              | 60.0               |
| 5 **--801      | 800:5         | ± 1%                   | 25.0               | ± 1%              | 60.0               |
| 5 **--102      | 1000:5        | ± 1%                   | 25.0               | ± 1%              | 75.0               |
| 5 **--122      | 1200:5        | ± 1%                   | 30.0               | ± 1%              | 90.0               |

**ORDERING NOTE\*:** When ordering, use the prefix below to indicate unit designation/configuration. (i.e. 5SFT-101)

RL = Thin Round Case with Standard 24" leads (Non-standard lengths are available upon request.)

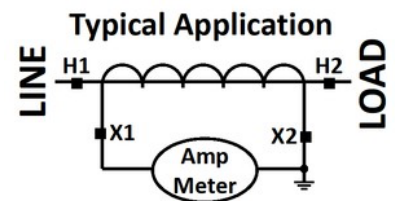
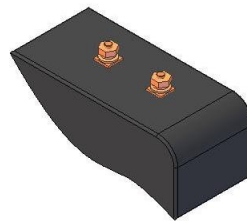
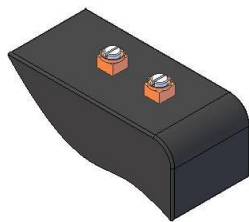
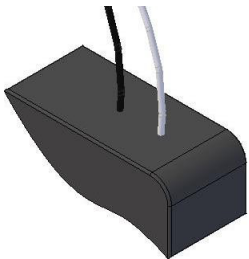
DRL = Thick Round Case with Standard 24" leads

SHX\* = Square Case with mounting holes

SFX\* = Square Case w/ molded feet and terminals

T = Male (Brass studs No. 8-32 UNC with one flat washer, one lock washer and one nut each)

Y = Female (Brass with one Cup washer, one lock washer and one No. 8-32 UNC binding head screw each)



L = 16awg Lead Wire      Y = Female Terminals      T = Male Terminals

\*X is to be replaced with "L", "Y" or "T" for terminal or lead designation.

\*Note-Mounting brackets for the 5SHT and 5SHL are sold separately (Part Number 1121A00020-1)

Rev F 06 12 2024