

VOLTAGE SIGNAL OUTPUT CURRENT TRANSFORMERS

Model CV125 Ratio to 1 (Window Size: 6.31" Dia.)

Application: Generally used to provide 0 - 1.0Vac output with a current input.
(Other secondary voltages also available)

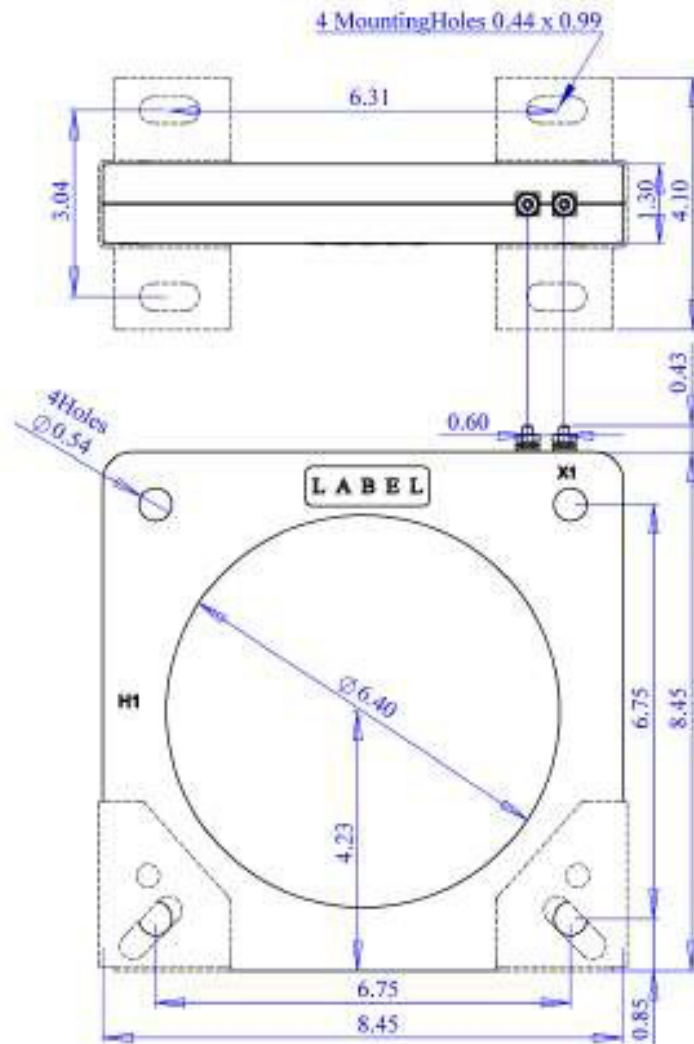
Frequency: 50-400 Hz

Insulation Level: 600 Volts, 10Kv BIL Full Wave

- Terminals are brass. See page 2 for available Stud and Female hardware options.
- Mounting brackets kits for the Model CV125SHT are sold separately. (P/N 1121A00018 CR/CL)
- Approximate weight: 3.5 lbs.



CV125SHT



Rev F 06 12 2024

VOLTAGE SIGNAL OUTPUT CURRENT TRANSFORMERS

Model CV125 Ratio to 1 (Window Size: 6.31" Dia.)

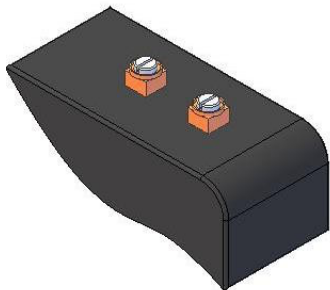
Catalog Number	Primary Current/ Sec. Voltage	Accuracy at 60Hz	TRF @ 30C	TRF @55C
CV125**-401-1	400A:1V	0.3%	1.0	0.8
CV125**-501-1	500A:1V	0.3%	1.0	0.8
CV125**-601-1	600A:1V	0.3%	1.0	0.8
CV125**-751-1	750A:1V	0.3%	1.0	0.8
CV125**-801-1	800A:1V	0.3%	1.0	0.8
CV125**-102-1	1000A:1V	0.3%	1.0	0.8
CV125**-122-1	1200A:1V	0.3%	1.0	0.8
CV125**-202-1	2000A:1V	0.3%	1.0	0.8
CV125**-252-1	2500A:1V	0.3%	1.0	0.8

ORDERING NOTE*: When ordering, use the prefix below to indicate unit designation/configuration. (i.e. CV125SHT-401-1)

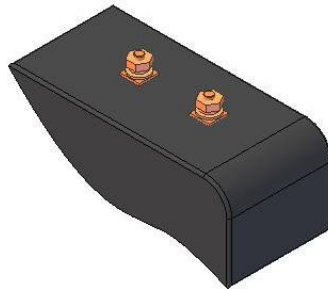
SH-* = Square Case with mounting holes

T = Male (Brass studs No. 8-32 UNC with one flat washer, one lock washer and one nut each.)

Y = Female (Brass with one Cup washer, one lock washer and one No. 8-32 UNC binding head screw each.)



Y = Female Terminals



T = Male Terminals